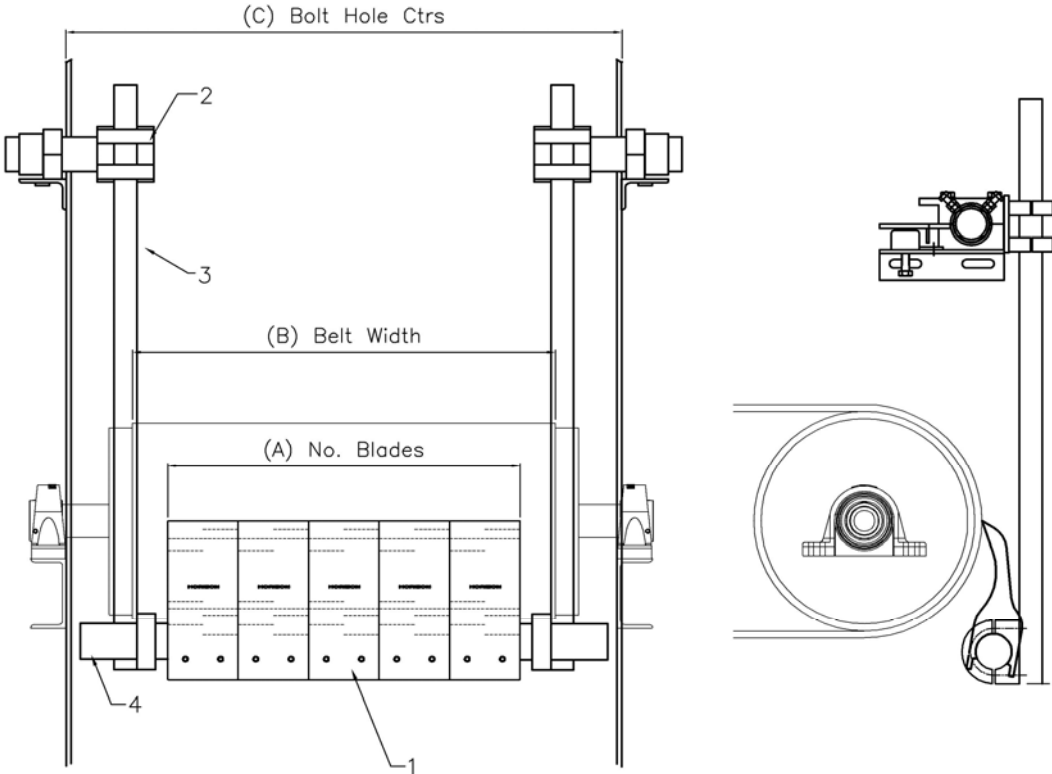


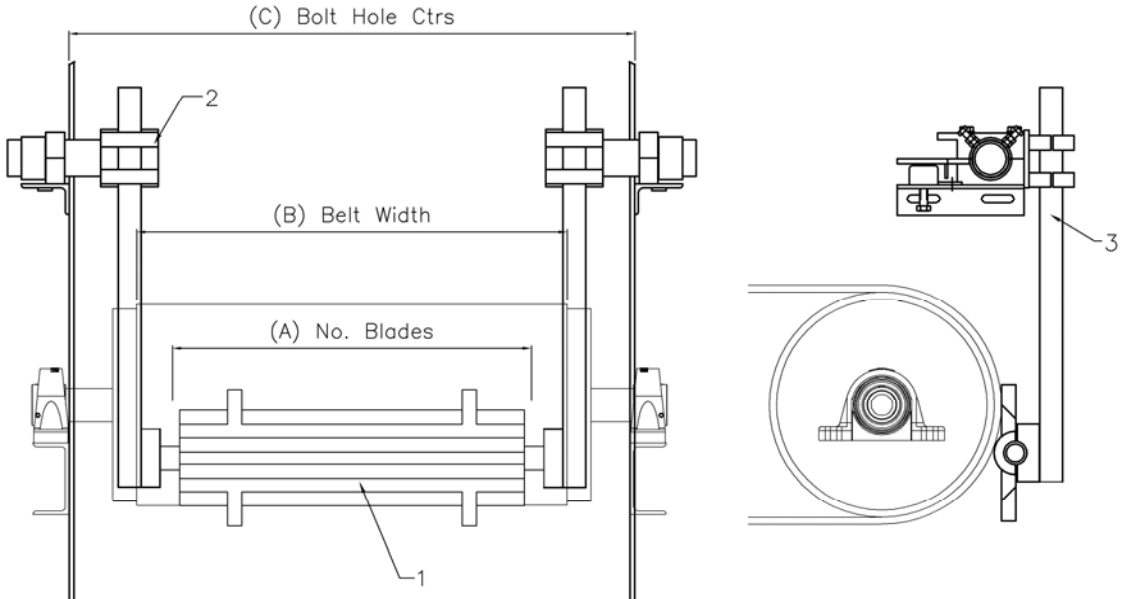
CONVEYOR EQUIPMENT

HEAVY DUTY PRIMARY BELT SCRAPERS

Internally Mounted 'H' Primary (Vulcanised Joints)



Internally Mounted 'H' Primary (Mechanical Joints)



Find out more about the Horizon range at: www.beltscrapers.co.uk



CONVEYOR EQUIPMENT

HEAVY DUTY INTERNAL 'H' PRIMARY SCRAPER SPECIFICATION

The simple mounting method of the internal 'H' Primary Scraper provides easy installation above the drum, the Spring mechanisms are slotted to take M16 bolts and are bolted outside the chute. For general use, the tips of the blades should be positioned on the horizontal centre line of the discharge pulley.

SCRAPER ADJUSTMENT

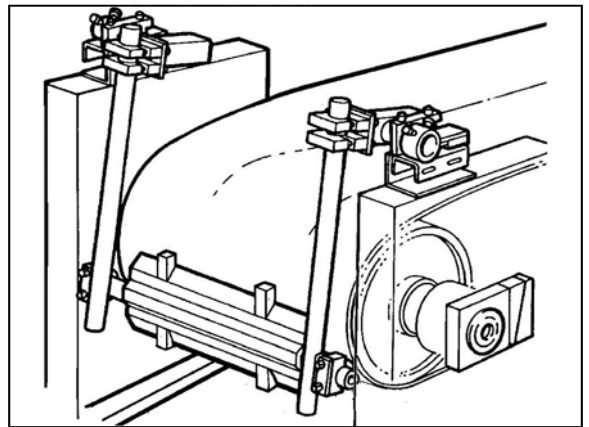
Once the Scraper and the blades are fitted in accordance with our recommendations, you can apply tension to both sides of the scraper by screwing the M24 bolt in the spring mechanism clockwise, this will raise the lever arm upwards and apply pressure to the scraper blade. Run the conveyor and check the cleaning before applying any more tension.

MAINTENANCE

General Inspection : A visual maintenance check should be made on a regular basis. At least once per month the Scraper beam and blades should be removed for cleaning and to check the blade condition. After re-fitting the Scraper beam back to the correct position follow the above adjustment procedure.

Blade Replacement : Remove all tension from the mechanisms & back the blade away from the belt the either turn the blade over or replace. Re-tension as per the above procedure.

ITEM No	PARTS	QTY Per Scraper
1	CP Polyurethane Blades or Solid 'H' Blade	Subject to B/W
2	Offset Arm	2
3	Suspension Arm	2
4	Scraper Beam for CP Blades only	1



Belt Width	450	500	600	650	750	800	900	1000	1050	1200	1350	1400	1500	1600	1800	2000	2200	2400
(A) No. Blades	2	3	3	4	4	5	5	6	6	7	8	9	9	10	11	12	14	15
(B) Beam O/A	1450	1500	1600	1650	1750	1800	1900	2000	2050	2200	2350	2400	2500	2600	2800	3000	3200	3400

Note: Should you require any further technical advice with regards to drawings, fitting and maintenance please contact us

Find out more about the Horizon range at: www.beltscrapers.co.uk