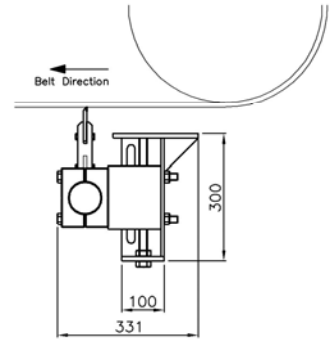
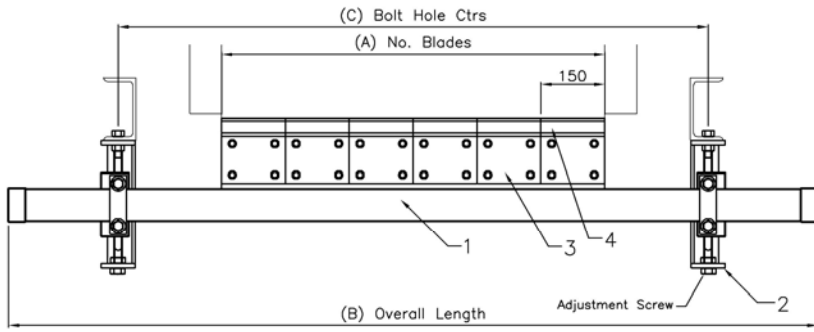


CONVEYOR EQUIPMENT

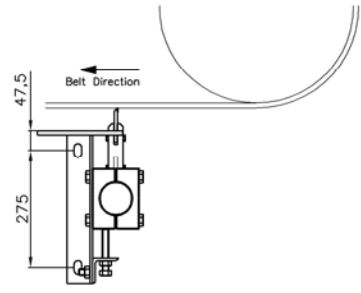
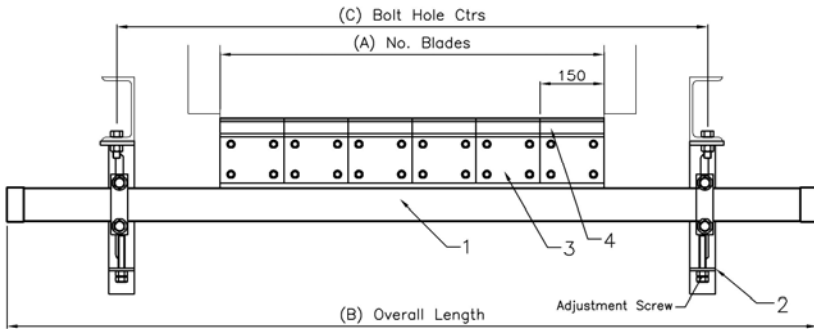
SECONDARY BELT SCRAPERS

'S' Type (Reversible)



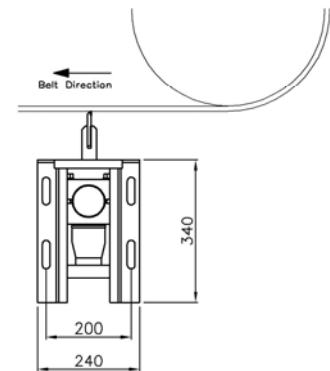
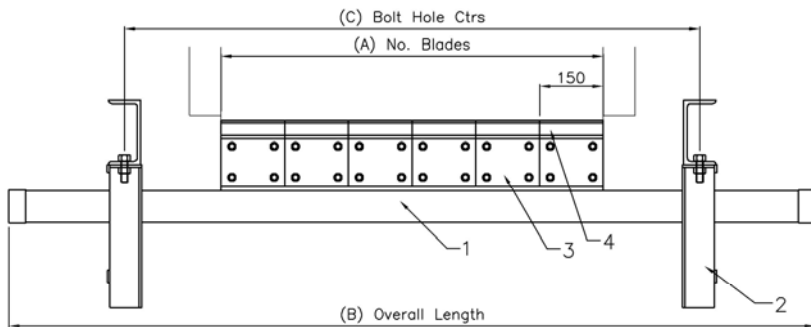
H-D Mechanism

'S' Type (Reversible)



C-D Mechanism

SCA Type (Mains Air Adjusted & Reversible)



Air Adjusted

*Please Note: All the above Scrapers can be used with mechanical clips

Find out more about the Horizon range at: www.beltscrapers.co.uk



CONVEYOR EQUIPMENT

HEAVY DUTY SECONDARY SCRAPER SPECIFICATION

The Horizon Secondary Scraper range provides easy installation, the Scraper operating mechanisms are slotted to take M16 bolts. This enables the operating mechanisms to be bolted under the conveyor stringers or onto the side of the chute, if they are bolted to the chute then an access hole may be required in the side of the chute to pass the Scraper beam through. The ideal mounting position for the Secondary Scraper is just behind the nip point where the return side of the conveyor belt leaves the conveyor pulley, should you have to fit the Scraper blades further back than 100mm from this point, **CHECK** the belt tension is adequate otherwise you may need to fit a roller over the top of the return belt.

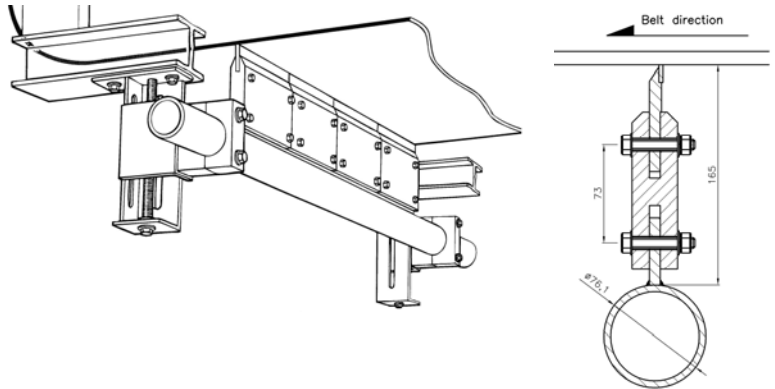
SCRAPER ADJUSTMENT

After mounting the operating mechanisms either to the chute sides or under the stringers, and **BEFORE** mounting the Scraper beam into position, check that the scraping edge of the blades is perfectly flat. Now fit the beam into position. To obtain the correct alignment of the Scraper, the Scraper blade angle should be set at **90 deg** to the conveyor belt. Using a 30mm socket spanner, screw the blade support beam up to the belt until the Scraper blades are making very light even contact across the conveyor belt at **the correct angle of 90 deg**, adjust with one full turn on both operating mechanisms, run the conveyor and check the cleaning, then apply tension as required. **DO NOT** apply too much tension as this will only cause **DAMAGE** to the Scraper, or the belt, or **BOTH**.

MAINTENANCE

A visual maintenance check should be made on a regular basis. At least once per month the Scraper beam should be removed for cleaning and to check the **blade alignment**. After re-fitting the Scraper back to the correct working position follow the above adjustment procedure.

ITEM No	PARTS	QTY Per Scraper
1	Scraper Carrying Beam	1
2	Operating Mechanism	2
3	Rubber Mounting Buffers	Subject to Belt Width
4	Tungsten Carbide Blades	Subject to Belt Width



Belt Width	450	500	600	650	750	800	900	1000	1050	1200	1350	1400	1500	1600	1800	2000	2200	2400
(A) No. Blades	3	4	4	5	5	6	6	7	7	8	9	10	10	11	12	14	15	16
(B) Beam O/A	1450	1500	1600	1650	1750	1800	1900	2000	2050	2200	2350	2400	2500	2600	2800	3000	3200	3400

Note: Should you require any further technical advice with regards to drawings, fitting and maintenance please contact us

Find out more about the Horizon range at: www.beltscrapers.co.uk